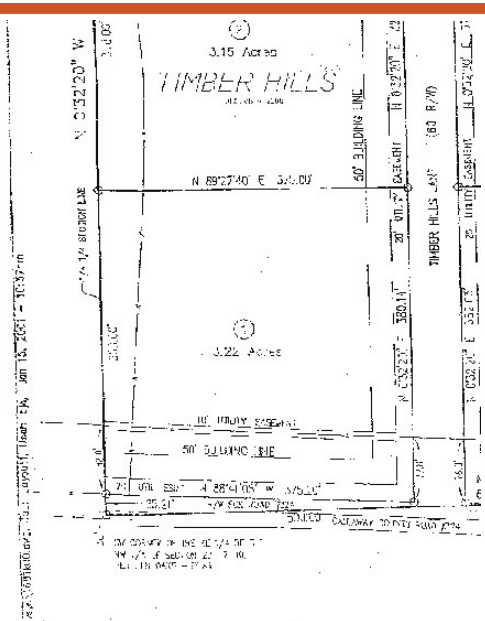


# LOT 1 TIMBER HILLS \$ 27,500

MLS# 318298



Lot Sz/ 3.22 Acres  
 County Callaway  
 Subdivision FULTON  
 Zoned Usage Agricultural  
 School District Fulton  
 Topography: Heavily Wooded  
 Road Surface: Gravel  
 Legal: Lot1 Timber Hills Subdivision  
 Heavily wooded acreage (3.22 Ac) entrance off County Road 324 or off Timber Hills Lane. Covenants & Restrictions state no mobiles or modulars. Approximately 20 minutes from Columbia or Fulton. Buyer to verify all measurements and info.

Directions: I-70, WW, or F to State Road J; at junction of F & J; South on J for 6 miles to County Road 324; L on Timber Hills Ln; Lot 1 on corner of Timber Hills & CR 324; also has drive off CR 324.

This property is currently available and being shown by a name you can trust, **SUSAN HORAK**, and a company you've heard of before, **RE/MAX Boone Realty**. Call Susan today to schedule your own private showing.



The **SUSAN HORAK**   

**Columbia's #1 Real Estate Agent at Columbia's #1 Real Estate Company**

1000 West Nifong Blvd. Building 8 Suite 100,  
Columbia, MO 65203

Office: (573)447-2146 (573)876-2849  
 Fax: (573) 447-0155 Mobile: (573) 864-0160  
 Residence: (573) 874-2249 E mail: [susan@susanhorak.com](mailto:susan@susanhorak.com)

Susan Horak, GRI, CRS, Platinum Club  
 Multi Million Dollar Producers  
 RE/MAX Ace Award Winner



The Fine Print: All measurements contained in this flyer are estimates. The information contained herein is furnished by the owner to the best of her or his knowledge, but is subject to verification by the purchaser, and agent assumes no responsibility for correctness thereof. The sale offering is made subject to errors, omissions, change of price, prior sale, or withdrawal without notice. In accordance with the law, this property is offered without respect to race, color, creed, religion, sex, familial status, disability, ancestry and sexual orientation.